

MERCANA

Excelsior I (72x18.3) Solid Wood Gold Metal Base 4 Cabinet Door SideBoard SKU: 68222



SOLID WOOD CONSTRUCTION WITH PREMIUM FINISH

Meticulously crafted from solid Indian mango wood, the Excelsior is sturdy, stable and is built to last. The sturdy construction is complemented by an amazing, natural brown polish that highlights the grain, knots, and character of the wood used, making this sideboard a sensation in your space. This solid wood body is supported by an x-shaped solid iron frame and base

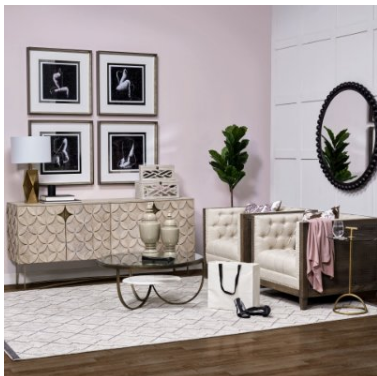
AMPLE STORAGE

Featuring two large storage compartments behind the intricately designed doors, the Excelsior has ample storage space to offer for all your kitchenware and more.



INTRICATE PATTERN

In addition to the spectacular finish and sturdy construction, the Excelsior also flaunts an intricate star-in-circle pattern on the door fronts which are guaranteed to catch your attention from any corner of the room.



ELEGANT INSPIRED DESIGN

Designed to suit elegant style spaces, the Excelsior flaunts a sleek silhouette and clean lines that contribute to its unsurpassed visuals.

A real showstopper of a sideboard that will suit the luxe and contemporary aesthetic. This cabinet is glamorous with a star-in-



AVAILABLE IN

1 Color

1 Size

1 Related Product



Explore Online

MERCANA

Excelsior I (72x18.3) Solid Wood Gold Metal Base 4 Cabinet Door SideBoard SKU: 68222

FEATURES & SPECIFICATIONS

Hand Made	Yes
Hand Painted (Y/N)	No
Top Scratch Resistant (Y/N)	No
Top Water Resistant (Y/N)	Yes
Top Stain Resistant (Y/N)	Yes
Body Scratch Resistant (Y/N)	No
Body Water Resistant (Y/N)	Yes
Body Stain Resistant (Y/N)	Yes
Fire Resistant (Y/N)	No
Kiln-Dried Wood	Yes
Finished Back	Yes
Product Type	Sideboard
is Unfinished?	No
Cable Management?	Yes
Mirrored?	No
Legs	Yes
Foot/Leg Design	Turned Legs
Sliding Doors	No
Locking Doors	No
Barn Door?	No
Door's Magnetic Catch	No
File Drawer Included (Y/N)	No
Shagreen-embossed Exterior	No
Magazine Rack	No
Tray Top	No
Orientation	Horizontal
Shelves Included	Yes
Fixed Shelf Quantity	0
Removeable Shelf Quantity	2
Shelf Support	Metal Pin
Number of Interior Shelves	2
Number of Exterior Shelves	0
Adjustable Shelves?	No
Drawers Included?	No
Drawer Safety Stop?	No

DIMENSIONS & WEIGHT

Length	72.5 inches
Width	18.3 inches
Height	32.5 inches
CBM	0.7047
Weight	142.00 lbs (64.40 kg)
Box Size	75.0L x 22.0W x 28.0H
Box Weight	154.00 lbs (69.84 kg)
Overall Weight Capacity	275 lbs (124.72 kg)
Table Top Floor to Top Height	32.5 inch (82.55 cm)
Table Top Surface Size (L x W x H)	72L x 18W x 0.62H
Table Top Surface Weight Capacity	275 lbs (124.72 kg)
Shelf Type 1 Height - Distance Between Shelves	10
Shelf Type 1 Depth - Front to Back	16.75 inch (42.54 cm)
Shelf Type 1 Width - Side to Side	35 inch (88.9 cm)
Shelf Type 1 Weight Capacity	75 lbs (34.01 kg)

MATERIALS & FINISHES

Top Color	White
Sample Available	No
Purposeful Distressing Type	No Distressing
Material	Solid Wood
Color	Brown
Gloss Finish?	No
Material Details	SOLID WOOD & METAL (IRON)
Material Code - Top	M0022-A
Wayfair Top Color	Gray
Top Finish Application Description	Spray with Lacquer Coated
Top Texture Description	Polished
Top Material	Solid Wood
Top Material Details	100% Mango Wood
Top Wood Species	Mango
Top Natural Variation	Natural Wood Grain Color Variation
Material Code - Body	M0022-A
Body Color	Gray
Body Finish Application Description	Spray with Lacquer Coated
Body Finish Texture	Polished
Body Material Type	Solid Wood
Body Material Details	100% Mango Wood

ASSEMBLY REQUIREMENT

Additional Tools Needed	All Tools Included
Tools Included	Allen key 4mm & Wrech (12x13)
# of Parts/Components	3
Assembly Required?	Yes
Removeable Legs (Y/N)	Yes
Additional tools needed (Y/N)	No
Avoid Power Tools?	Yes
Level of Assembly	Partial
Assembly Instructions	68222_ASSEMBLY.pdf